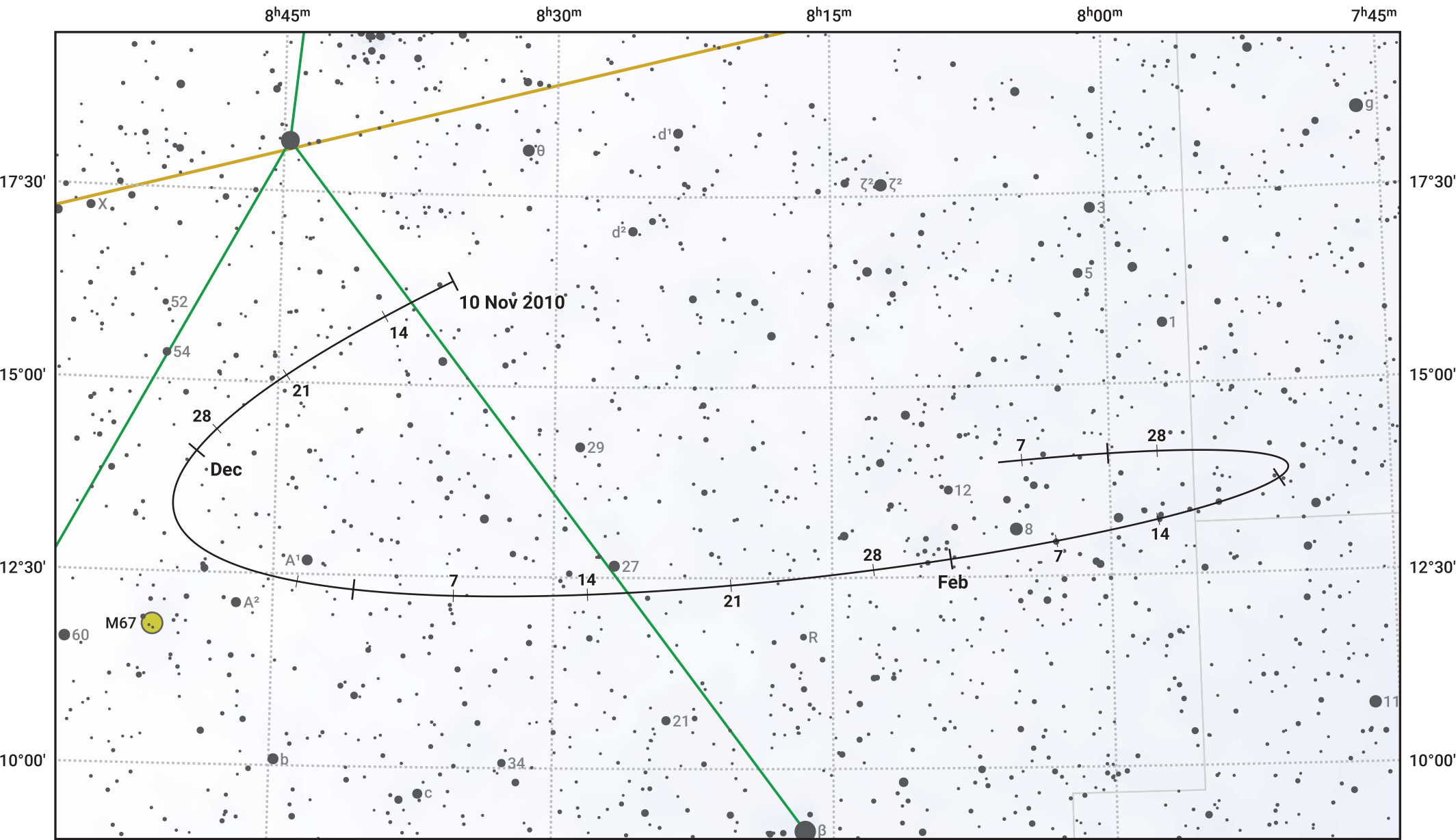


# The path of Asteroid 7 Iris around opposition on 24 Jan 2011



© Dominic Ford 2011–2024. Date markers placed at midnight UTC. Downloaded from <https://in-the-sky.org>

Magnitude scale: ● 10.0 ● 9.0 ● 8.0 ● 7.0 ● 6.0 ● 5.0 ● 4.0 ● 3.0

— Ecliptic Plane

- Galaxy
- Bright nebula
- Open cluster
- Globular cluster

Date	Mag	Phase
2010 Dec 1	9.0	95%
2011 Jan 1	8.4	99%
2011 Jan 4	8.4	99%
2011 Feb 1	8.2	100%
2011 Mar 1	9.1	98%
2011 Mar 10	9.4	97%
2011 Apr 1	9.9	96%