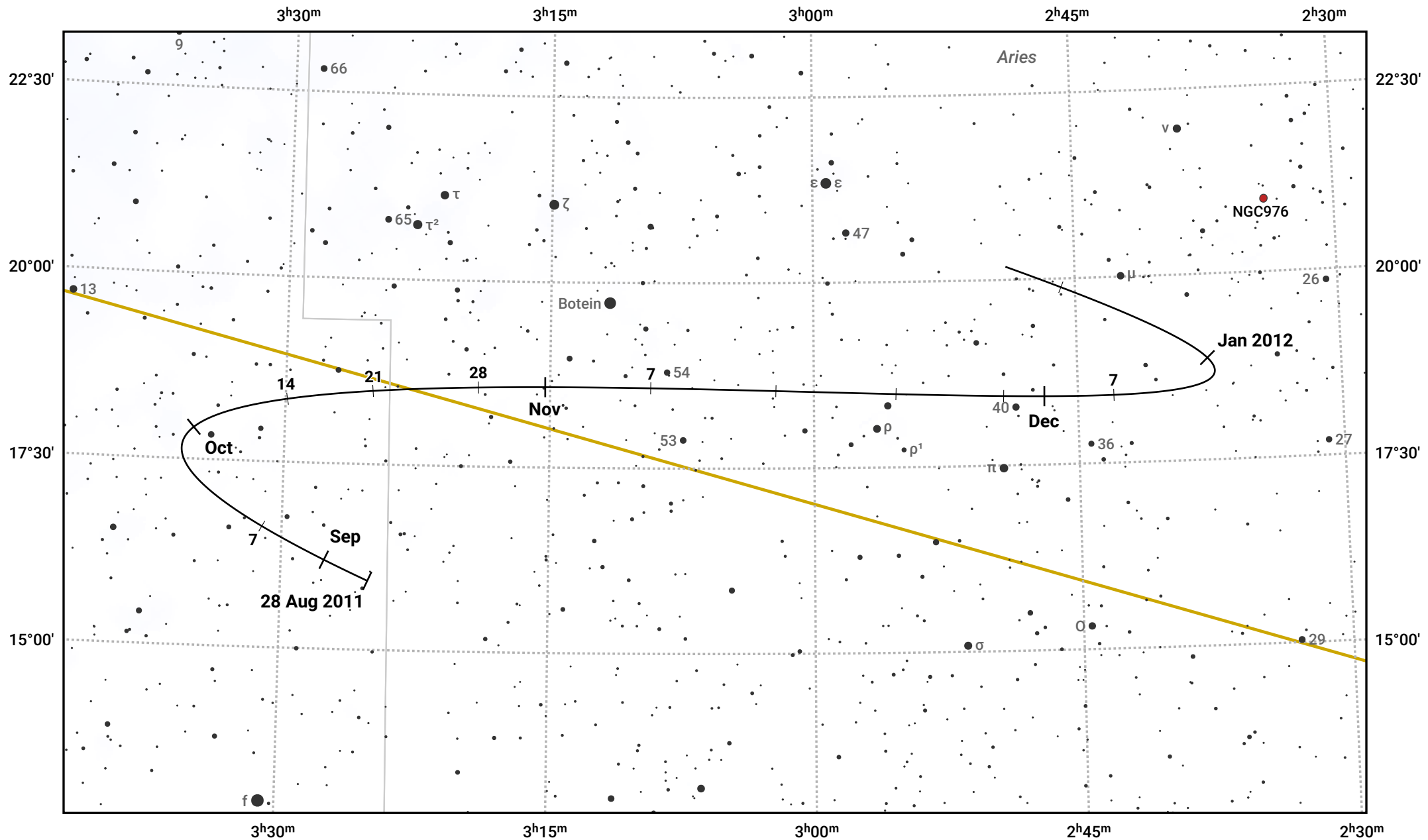


The path of Asteroid 68 Leto around opposition on 11 Nov 2011



© Dominic Ford 2011–2024. Date markers placed at midnight UTC. Downloaded from <https://in-the-sky.org>

Magnitude scale: \cdot 10.0 \cdot 9.0 \cdot 8.0 \cdot 7.0 \cdot 6.0 \bullet 5.0 \bullet 4.0

— Ecliptic Plane

Galaxy Bright nebula Open cluster Globular cluster

Date	Mag	Phase
2011 Sep 1	11.3	96%
2011 Oct 1	10.8	98%
2011 Oct 23	10.3	99%
2011 Nov 1	10.1	100%
2011 Dec 1	10.5	99%
2012 Jan 1	11.3	97%
2012 Jan 4	11.3	97%