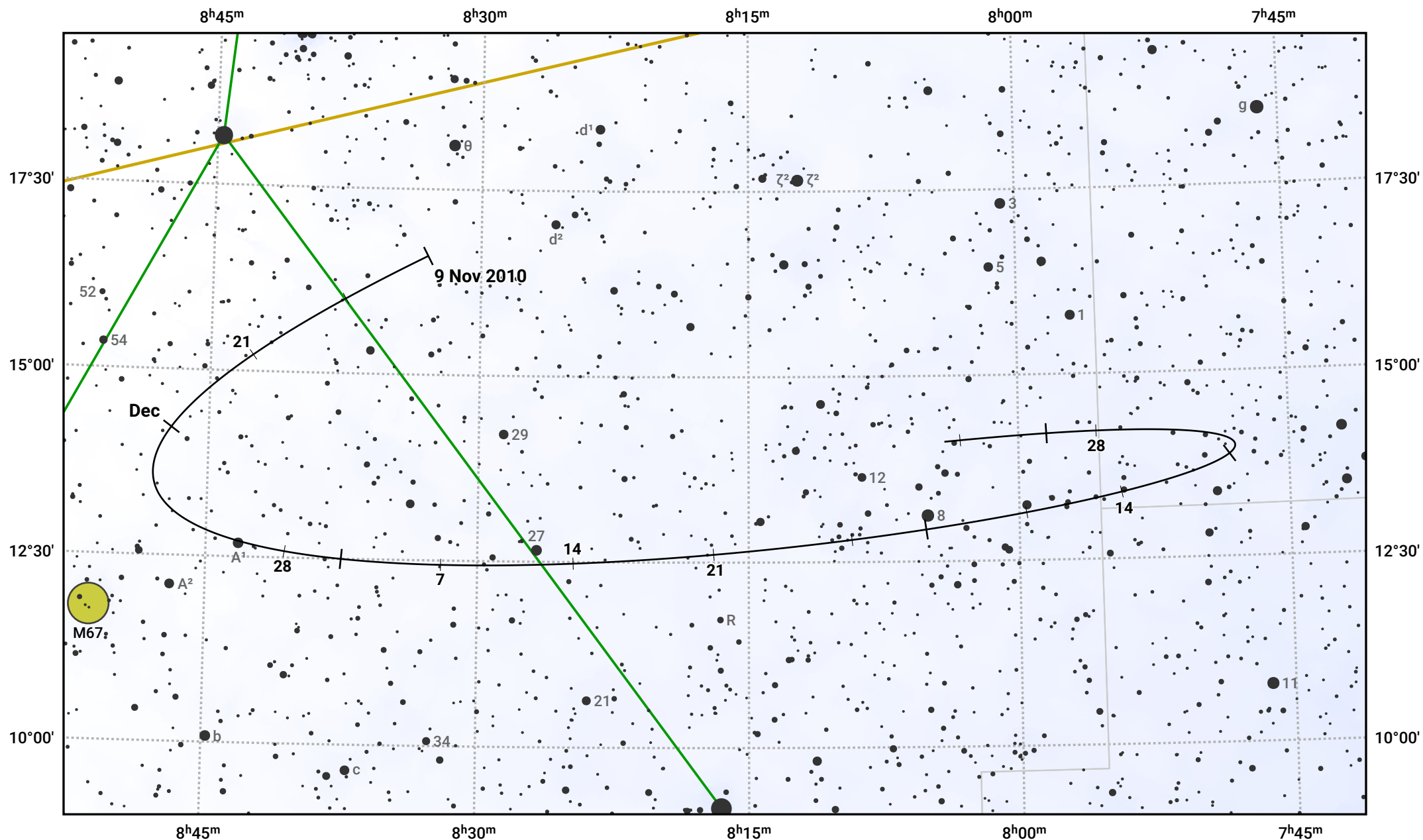


The path of Asteroid 7 Iris around opposition on 23 Jan 2011



© Dominic Ford 2011–2024. Date markers placed at midnight UTC. Downloaded from <https://in-the-sky.org>

Magnitude scale: \bullet 10.0 \bullet 9.0 \bullet 8.0 \bullet 7.0 \bullet 6.0 \bullet 5.0 \bullet 4.0 \bullet 3.0

— Ecliptic Plane

◉ Galaxy
 ■ Bright nebula
 ◯ Open cluster
 ⊕ Globular cluster

Date	Mag	Phase
2010 Dec 1	9.0	95%
2011 Jan 1	8.4	99%
2011 Jan 3	8.3	99%
2011 Feb 1	8.2	100%
2011 Mar 1	9.1	98%
2011 Mar 9	9.3	97%
2011 Apr 1	9.9	96%