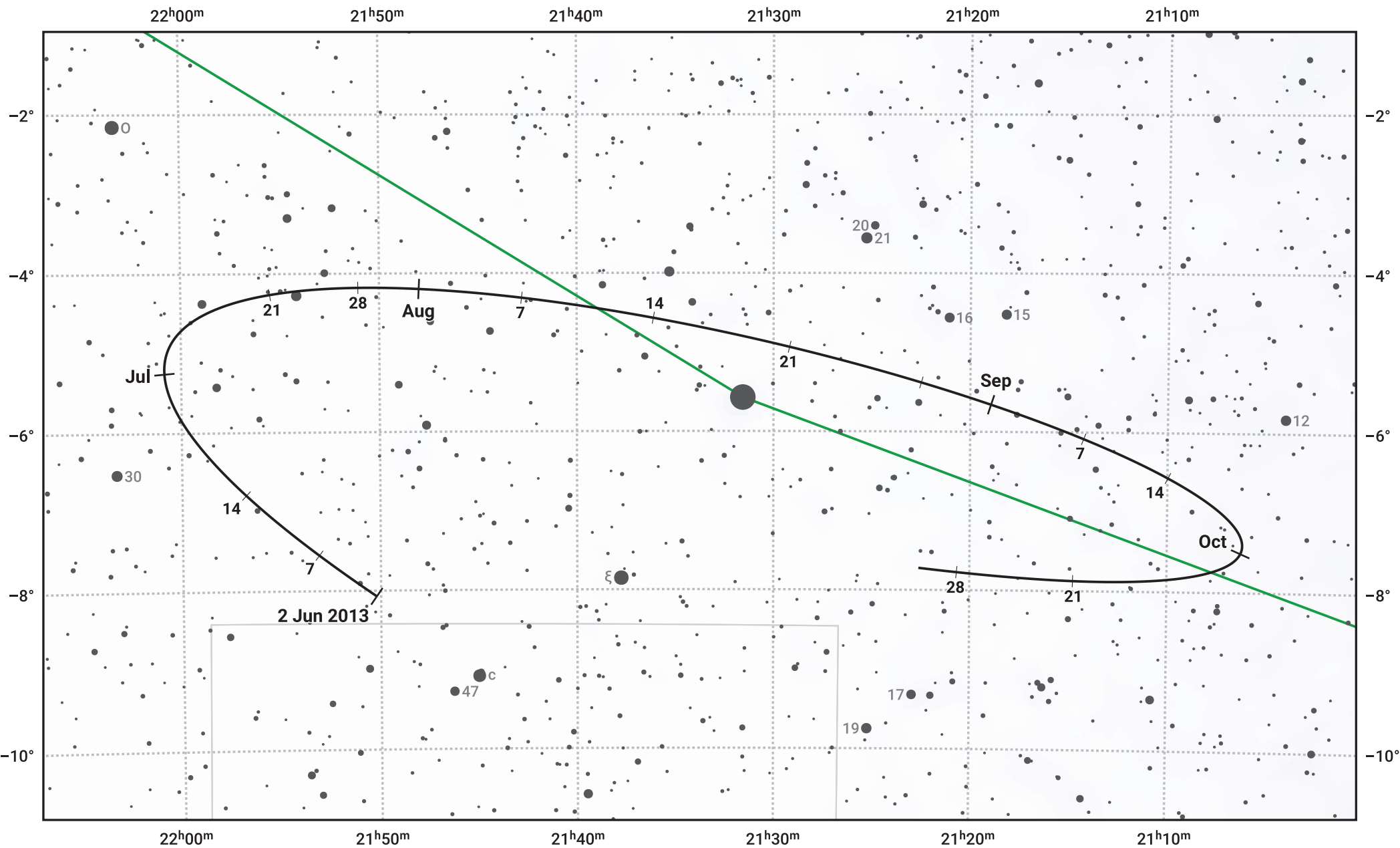


# The path of Asteroid 7 Iris around opposition on 16 Aug 2013



© Dominic Ford 2011–2024. Date markers placed at midnight UTC. Downloaded from <https://in-the-sky.org>

Magnitude scale:  $\bullet$  10.0  $\bullet$  9.0  $\bullet$  8.0  $\bullet$  7.0  $\bullet$  6.0  $\bullet$  5.0  $\bullet$  4.0  $\bullet$  3.0  $\bullet$  2.0

— Ecliptic Plane

Galaxy Bright nebula Open cluster Globular cluster

| Date        | Mag | Phase |
|-------------|-----|-------|
| 2013 Jul 1  | 9.4 | 97%   |
| 2013 Jul 13 | 9.0 | 98%   |
| 2013 Aug 1  | 8.5 | 99%   |
| 2013 Sep 1  | 8.3 | 99%   |
| 2013 Oct 1  | 8.8 | 96%   |