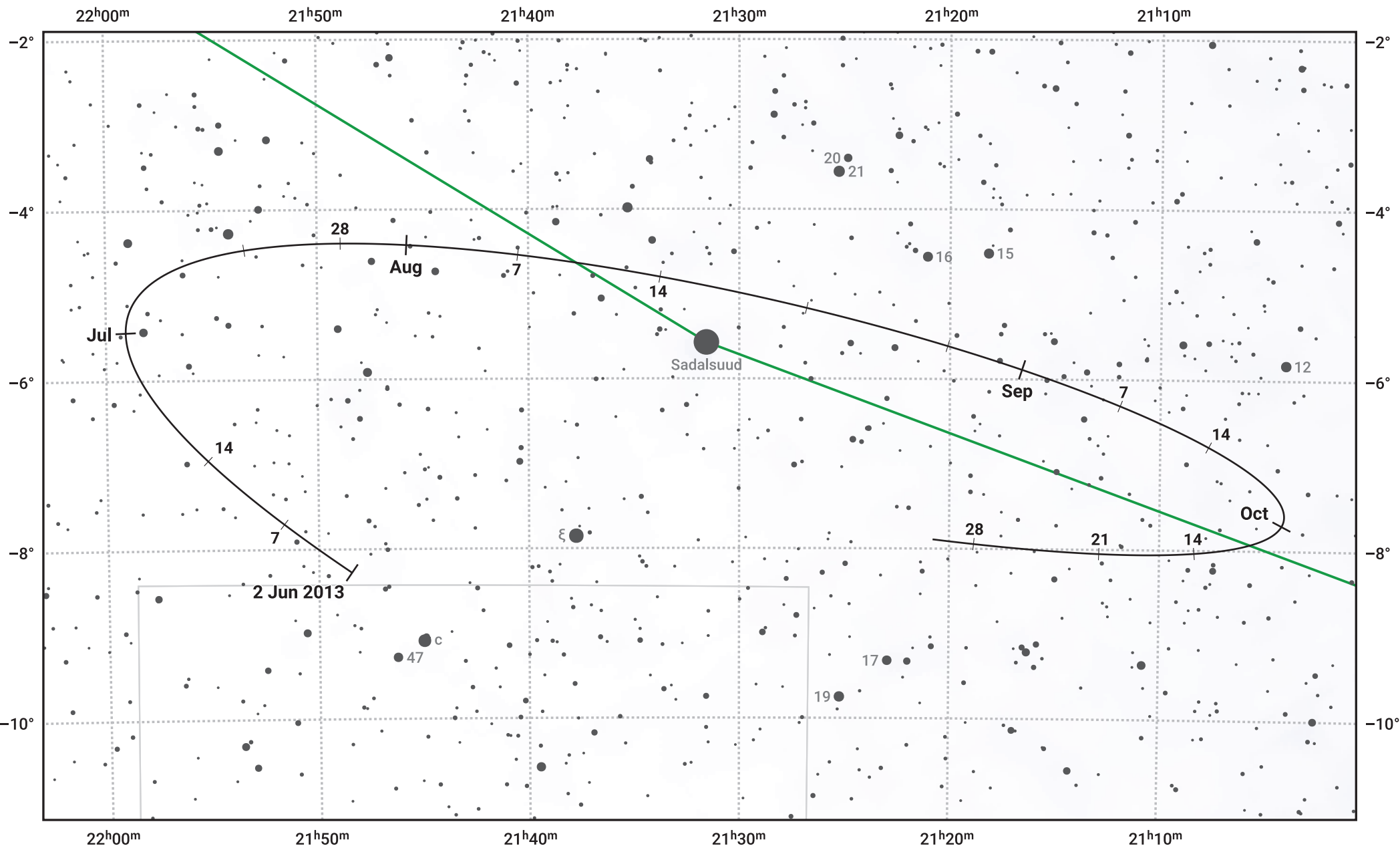


The path of Asteroid 7 Iris around opposition on 16 Aug 2013



© Dominic Ford 2011–2024. Date markers placed at midnight UTC. Downloaded from <https://in-the-sky.org>

Magnitude scale: \bullet 10.0 \bullet 9.0 \bullet 8.0 \bullet 7.0 \bullet 6.0 \bullet 5.0 \bullet 4.0 \bullet 3.0 \bullet 2.0

— Ecliptic Plane

- Galaxy
- Bright nebula
- Open cluster
- ⊕ Globular cluster

Date	Mag	Phase
2013 Jul 1	9.4	97%
2013 Jul 13	9.0	98%
2013 Aug 1	8.4	99%
2013 Sep 1	8.3	99%
2013 Oct 1	8.9	96%