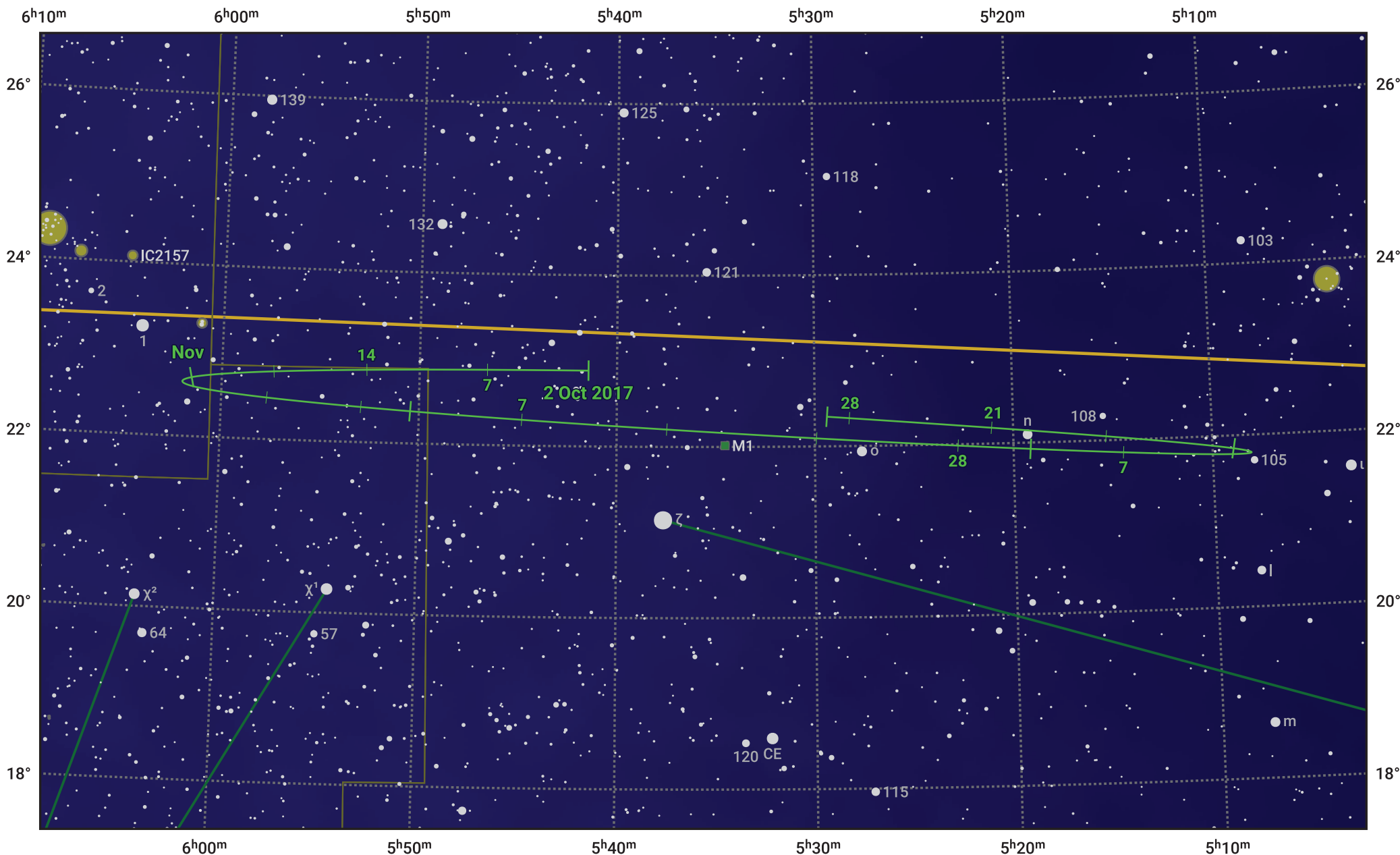


The path of Asteroid 20 Massalia around opposition on 16 Dec 2017



© Dominic Ford 2011–2024. Date markers placed at midnight UTC. Downloaded from <https://in-the-sky.org>

Magnitude scale: 10.0 9.0 8.0 7.0 6.0 5.0 4.0 3.0

— Ecliptic Plane

Galaxy Bright nebula Open cluster Globular cluster

| Date | Mag | Phase |
|-------------|------|-------|
| 2017 Nov 1 | 9.8 | 96% |
| 2017 Nov 13 | 9.5 | 98% |
| 2017 Dec 1 | 9.0 | 99% |
| 2017 Dec 14 | 8.5 | 100% |
| 2018 Jan 1 | 9.0 | 99% |
| 2018 Jan 20 | 9.5 | 97% |
| 2018 Feb 1 | 9.8 | 96% |
| 2018 Mar 1 | 10.4 | 94% |