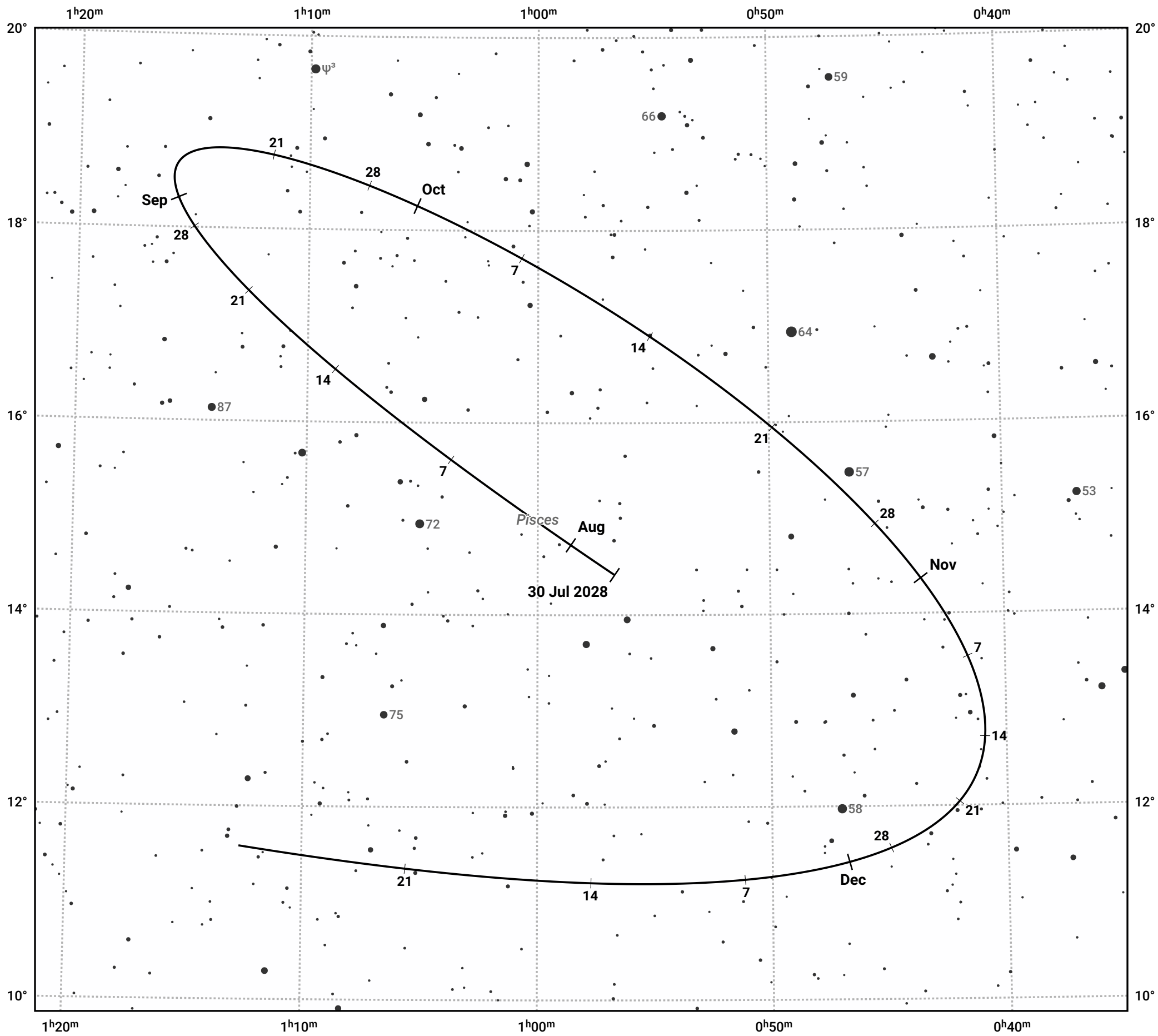


The path of Asteroid 7 Iris around opposition on 13 Oct 2028



© Dominic Ford 2011–2024. Date markers placed at midnight UTC. Downloaded from <https://in-the-sky.org>

Magnitude scale: · 10.0 · 9.0 · 8.0 · 7.0 · 6.0 ● 5.0

— Ecliptic Plane

● Galaxy ■ Bright nebula ● Open cluster ⊕ Globular cluster

Date	Mag	Phase
2028 Aug 1	9.1	94%
2028 Sep 1	8.3	96%
2028 Sep 6	8.2	97%
2028 Oct 1	7.4	99%
2028 Oct 11	7.2	100%
2028 Nov 1	7.5	99%
2028 Nov 27	8.2	96%
2028 Dec 1	8.3	95%