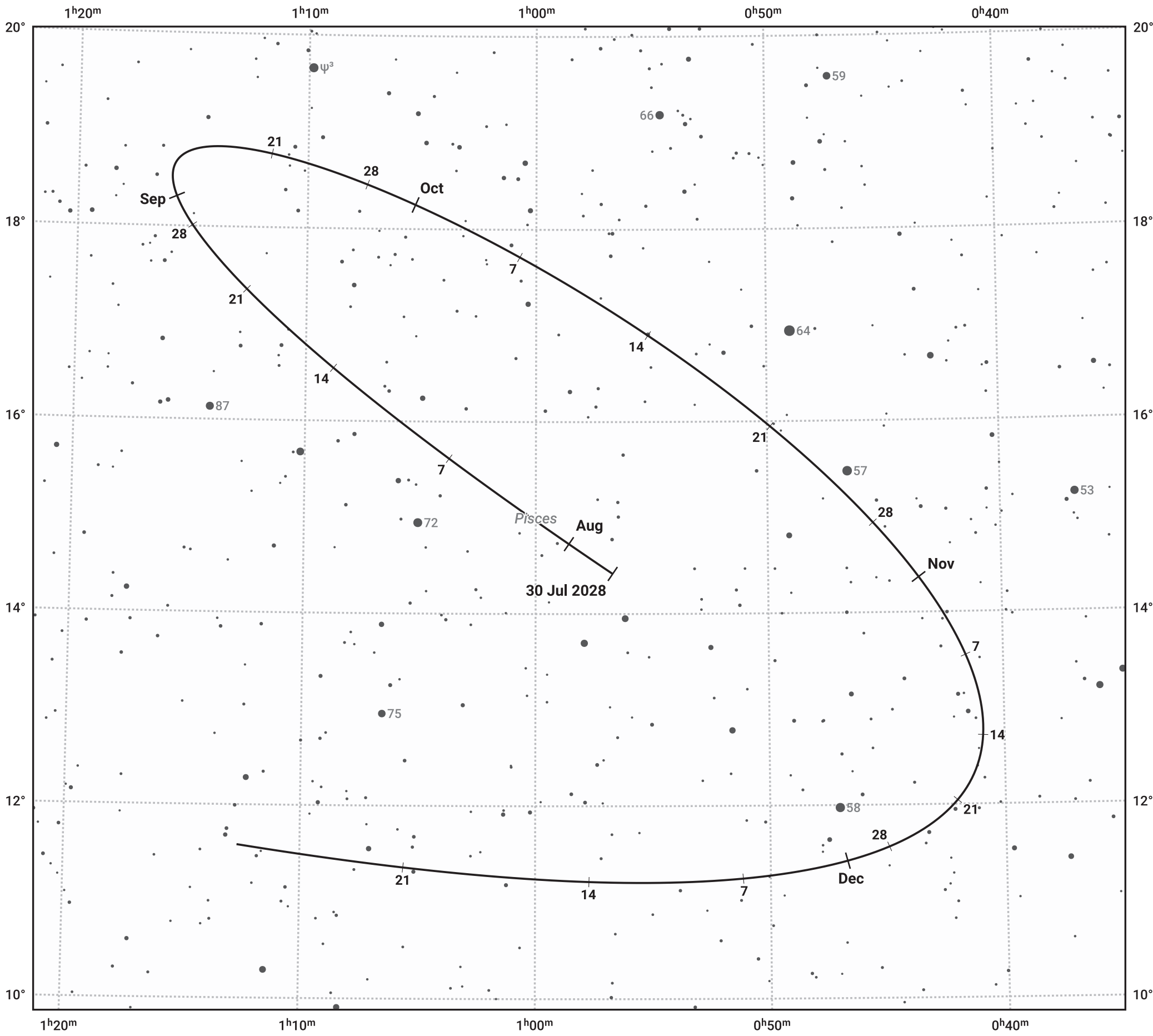


The path of Asteroid 7 Iris around opposition on 13 Oct 2028



© Dominic Ford 2011–2024. Date markers placed at midnight UTC. Downloaded from <https://in-the-sky.org>

Magnitude scale: 10.0 9.0 8.0 7.0 6.0 5.0

Ecliptic Plane

- Galaxy
- Bright nebula
- Open cluster
- Globular cluster

Date	Mag	Phase
2028 Aug 1	9.1	94%
2028 Sep 1	8.3	96%
2028 Sep 6	8.2	97%
2028 Oct 1	7.4	99%
2028 Oct 11	7.2	100%
2028 Nov 1	7.5	99%
2028 Nov 27	8.2	96%
2028 Dec 1	8.3	95%