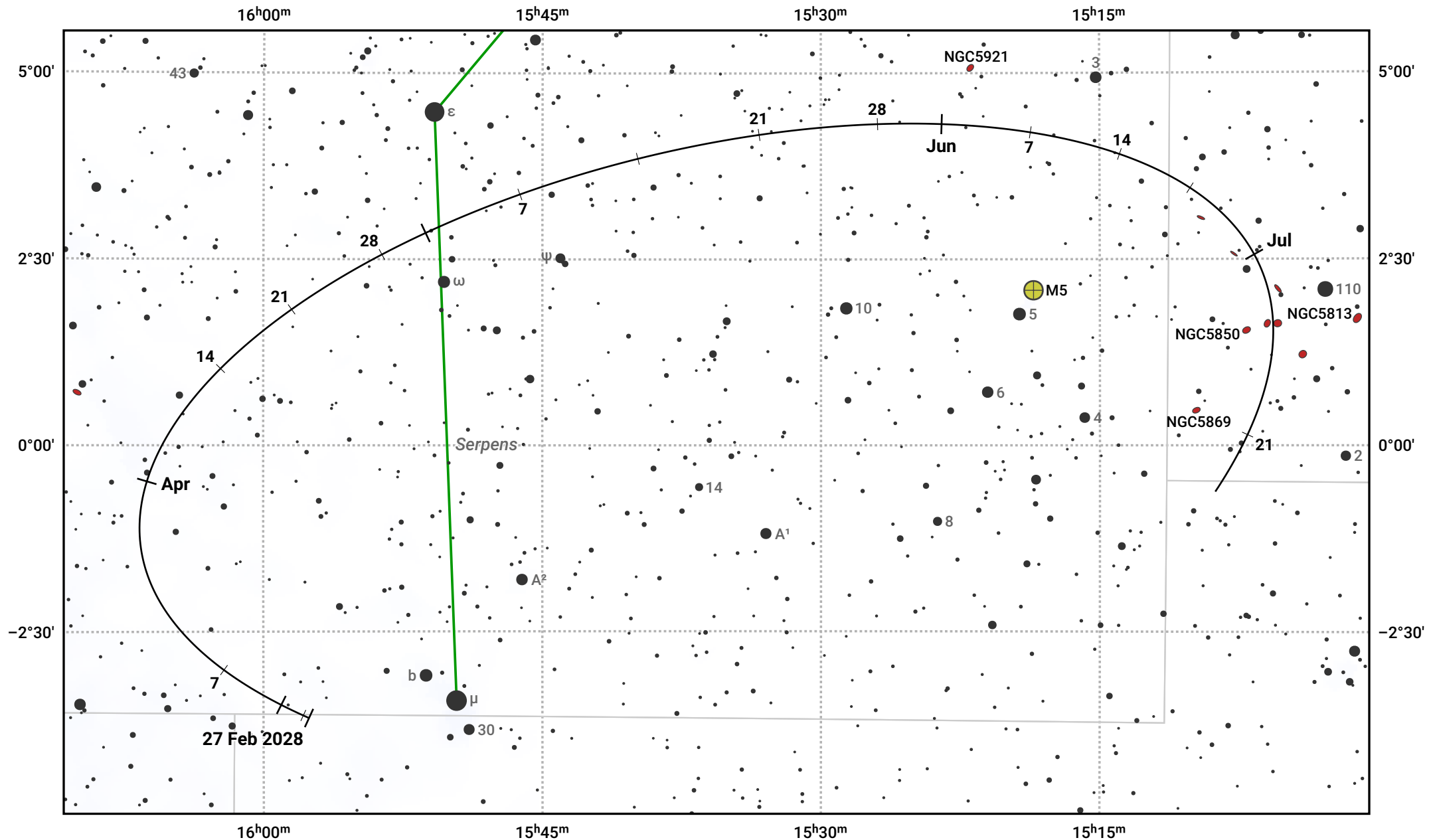


The path of Asteroid 6 Hebe around opposition on 12 May 2028



© Dominic Ford 2011–2024. Date markers placed at midnight UTC. Downloaded from <https://in-the-sky.org>

Magnitude scale: 10.0 9.0 8.0 7.0 6.0 5.0 4.0 3.0

— Ecliptic Plane

Galaxy Bright nebula Open cluster Globular cluster

Date	Mag
2028 Mar 1	10.9
2028 Apr 1	10.4
2028 Apr 26	9.9
2028 May 1	9.8
2028 Jun 1	9.9
2028 Jul 1	10.3