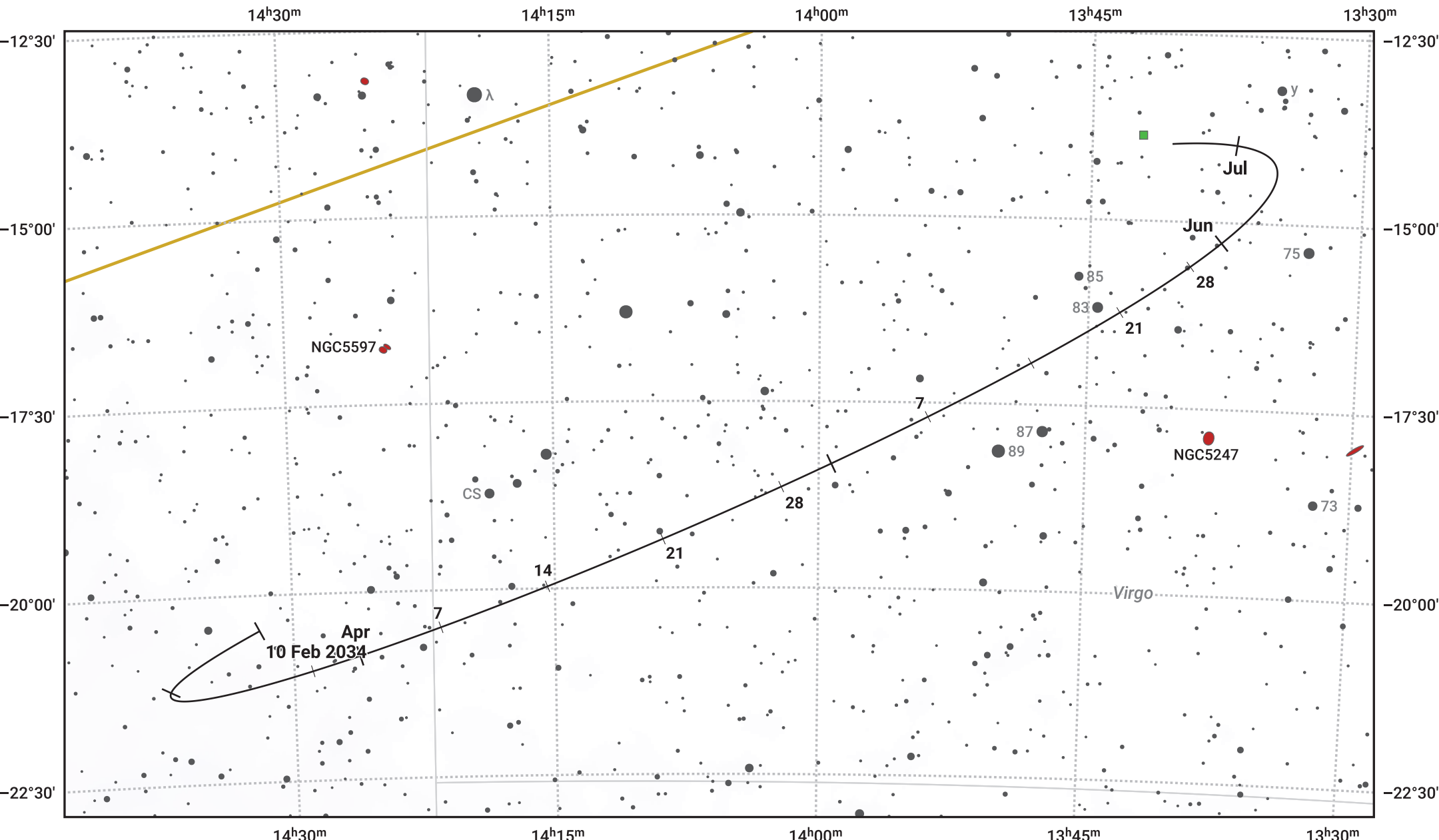


The path of Asteroid 7 Iris around opposition on 26 Apr 2034



© Dominic Ford 2011–2024. Date markers placed at midnight UTC. Downloaded from <https://in-the-sky.org>

Magnitude scale: •10.0 •9.0 •8.0 •7.0 •6.0 ●5.0 ●4.0

— Ecliptic Plane

▬ Galaxy
 ■ Bright nebula
 ● Open cluster
 ⊕ Globular cluster

Date	Mag
2034 Mar 1	10.7
2034 Apr 1	10.1
2034 Apr 9	9.9
2034 May 1	9.7
2034 Jun 1	10.4
2034 Jul 1	10.9
2034 Jul 5	10.9