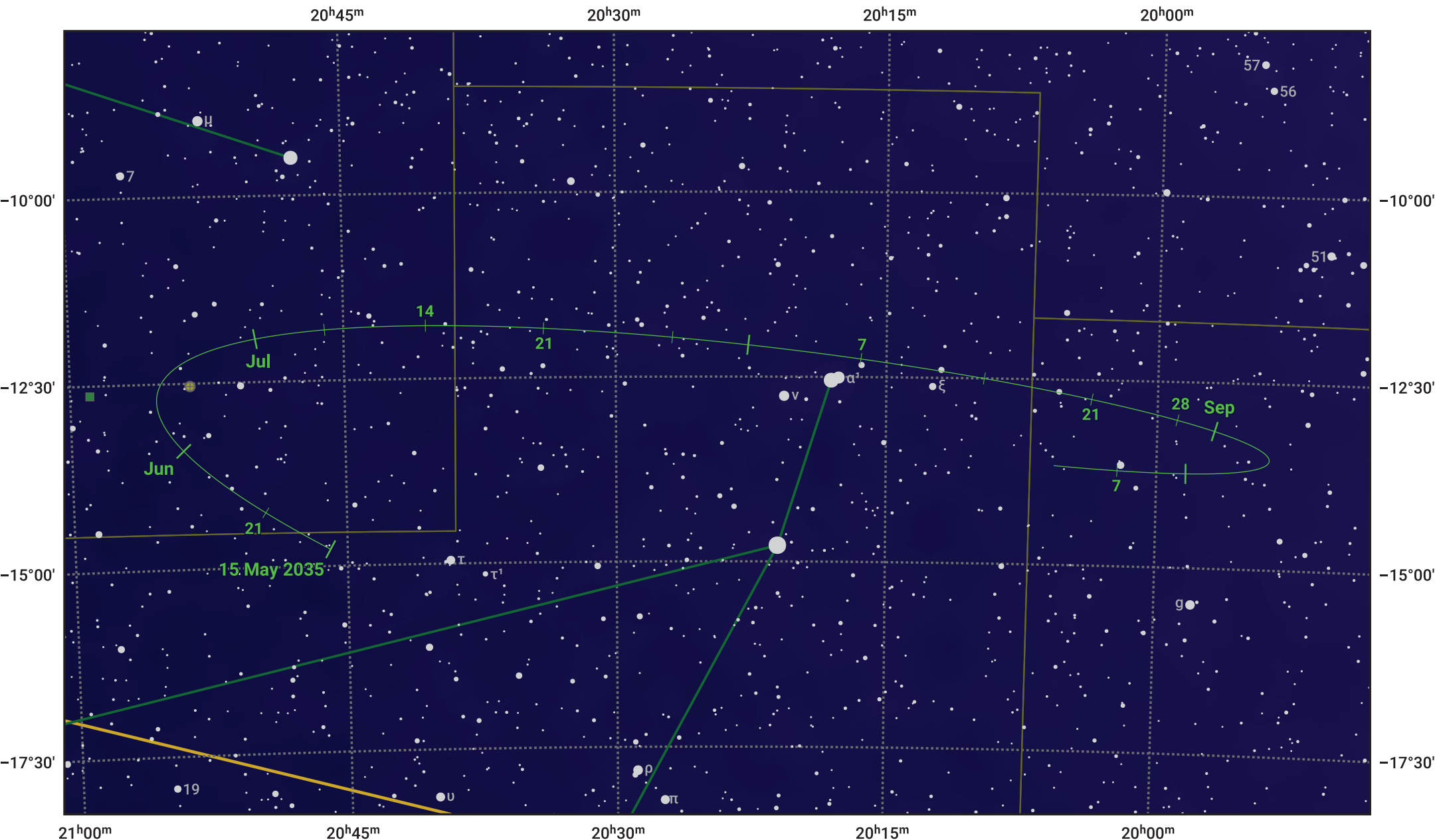


The path of Asteroid 7 Iris around opposition on 29 Jul 2035



© Dominic Ford 2011–2024. Date markers placed at midnight UTC. Downloaded from <https://in-the-sky.org>

Magnitude scale: 10.0 9.0 8.0 7.0 6.0 5.0 4.0 3.0

— Ecliptic Plane

Galaxy Bright nebula Open cluster Globular cluster

Date	Mag	Phase
2035 Jun 1	10.0	97%
2035 Jun 27	9.3	98%
2035 Jul 1	9.2	99%
2035 Aug 1	8.4	100%
2035 Sep 1	9.0	98%
2035 Oct 1	9.5	95%