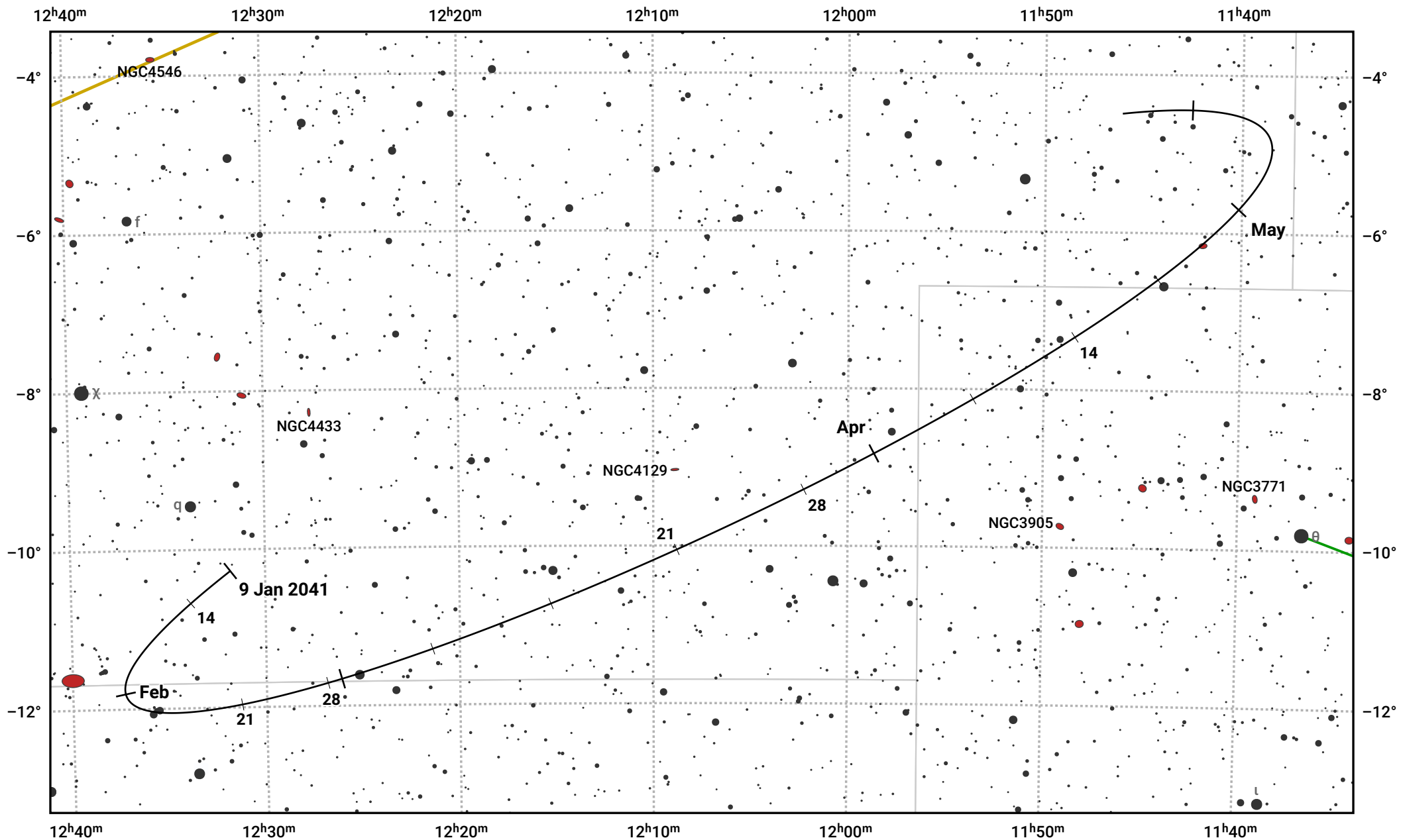


The path of Asteroid 7 Iris around opposition on 25 Mar 2041



© Dominic Ford 2011–2024. Date markers placed at midnight UTC. Downloaded from <https://in-the-sky.org>

Magnitude scale: · 11.0 · 10.0 · 9.0 · 8.0 · 7.0 ● 6.0 ● 5.0 ● 4.0

— Ecliptic Plane

● Galaxy ■ Bright nebula ● Open cluster ⊕ Globular cluster

Date	Mag
2041 Feb 1	10.3
2041 Mar 1	9.8
2041 Mar 12	9.6
2041 Apr 1	9.5
2041 May 1	10.2
2041 May 19	10.6
2041 Jun 1	10.8